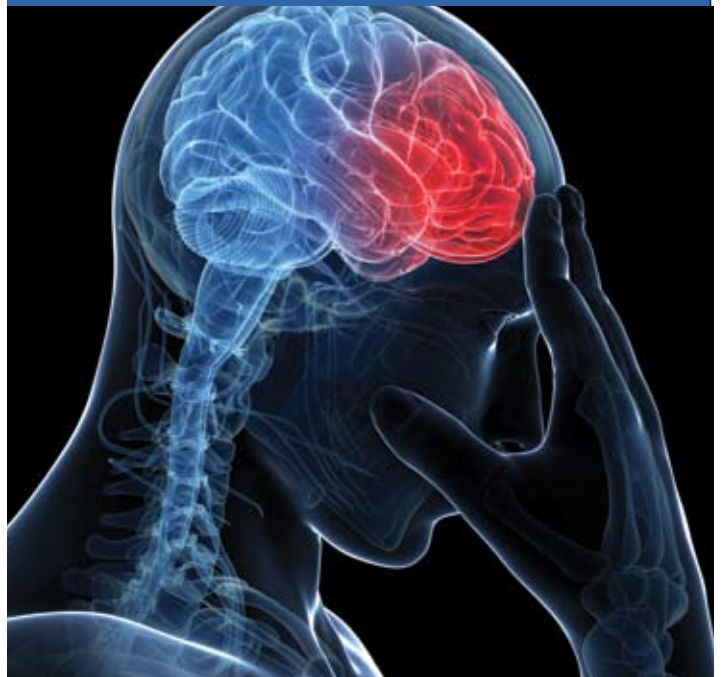


# Advances in Neurovascular Care 2016



**Saturday, October 1, 2016**  
**7:30 a.m. - 3:15 p.m.**

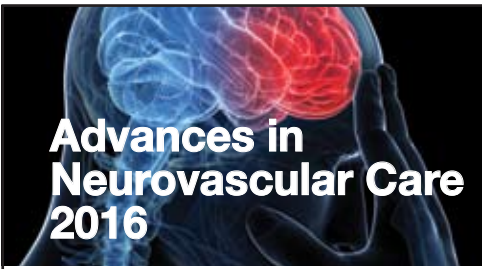
John Q. Hammons Convention Center  
3303 Pinnacle Parkway  
Rogers, Arkansas



**WashingtonRegional**  
Medical Center

Medical Staff Services  
3215 N. North Hills  
Fayetteville, Arkansas 72703

 **WashingtonRegional**  
Medical Center



## Advances in Neurovascular Care 2016

### Who Should Attend

This program has been designed for all Clinically Licensed Practitioners.

### Objectives

At the conclusion of this conference, participants should be able to:

1. Describe methods used in the initial evaluation of patients with stroke or TIA.
2. Describe treatment options available for stroke and TIA.
3. Identify conditions that may be associated with intracranial aneurysms.
4. Describe treatment options for intracranial aneurysms
5. Describe the role of primary care physicians in primary and secondary prevention of stroke.
6. Describe the AHA / ASA recommendations for stroke systems of care.
7. Describe the relationship between cognitive disorders and vascular disease.
8. Describe the development and impact of patient-centered medical home in Arkansas.

*This Live activity, Advances in Neurovascular Care 2016, with a beginning date of 10/1/2016, has been submitted and is pending acceptance for 6 Elective credit(s) by the American Academy of Family Physicians. Physicians should claim only the credit commensurate with the extent of their participation in the activity.*

## Faculty

**Margaret Tremwel, MD, PhD**  
Neurologist  
Neurosciences Institute  
Washington Regional  
Medical Center  
Fayetteville, AR

**Mahan Ghiassi, MD**  
Neurosurgeon  
Neurosciences Institute  
Washington Regional  
Medical Center  
Fayetteville, AR

**Alicia Berkemeyer**  
Vice President  
Enterprise Primary Care  
& Pharmacy Program  
Arkansas Blue Cross  
and Blue Shield  
Little Rock, AR

**Mayshan Ghiassi, MD**  
Neurosurgeon  
Neurosciences Institute  
Washington Regional  
Medical Center  
Fayetteville, AR

**Rebecca Cowie, APRN**  
Stroke Program Director  
Washington Regional  
Medical Center  
Fayetteville, AR

## Morning Sessions

7:30 - 7:55 a.m.

Continental Breakfast/Registration

7:55 - 8:00 a.m.

**Welcome/Opening Remarks**

Margaret Tremwel, MD, PhD

8:00 - 8:15 a.m.

**What's New in Northwest Arkansas**

Margaret Tremwel, MD, PhD

8:15 - 9:00 a.m.

**Initial Stroke Evaluation & Management**

Mahan Ghiassi, MD

9:00 - 9:15 a.m.

Break

9:15 - 10:00 a.m.

**Advances in Intracranial Aneurysms**

Mayshan Ghiassi, MD

10:00 - 11:00 a.m.

**Payment Innovation in Support of  
Population Health**

Alicia Berkemeyer

11:00 - 11:45 a.m.

Panel Discussion

11:45 - 12:30 p.m.

Lunch (provided)

## Afternoon Sessions

12:30 - 1:15 p.m.

**Systems of Care**

Rebecca Cowie, APRN

1:15 - 1:30 p.m.

Break

1:30 - 2:15 p.m.

**Cognitive Disorders in Vascular Disease**

Margaret Tremwel, MD, PhD

2:15 - 3:00 p.m.

Panel Discussion

3:00 - 3:15 p.m.

**Closing Remarks, Evaluations**

Margaret Tremwel, MD, PhD

## Location

John Q. Hammons Convention Center  
3303 Pinnacle Parkway, Rogers, Arkansas

## Preregistration

For more information or to register please call the MSS Office at (479) 463-1568 or email [medstaff@wregional.com](mailto:medstaff@wregional.com)

*There is no fee for this program. Seating is limited. Please preregister.*